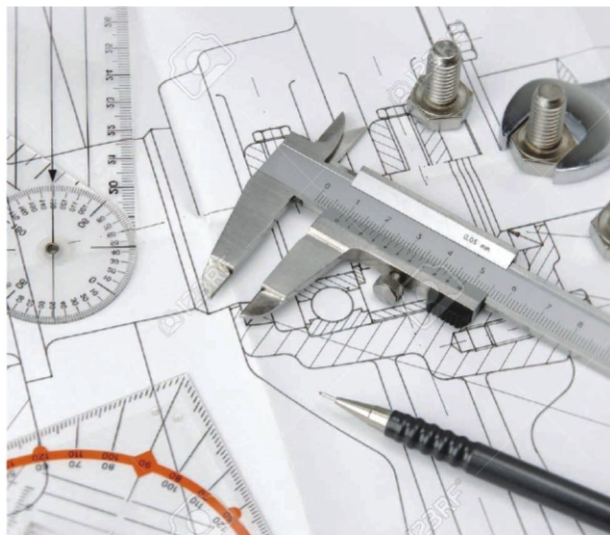




INDIA INDUSTRIAL TECHNOLOGY

TOTAL ENGINEERING SOLUTIONS



**PRODUCT
CATALOGUE**





Profile

SONATEC is a leading and well recognized name in the field of design, manufacturing and execution of all types of Hydraulic Projects. With involved service operations backed by skilled and innovative design team comprising professional engineers and technicians, we are able to come out with custom and adaptable press designs. Further , the use of state-of-the-art computer based engineering technologies like Computer Aided Manufacturing (CAM), Computer Aided Design (CAD), Computer Aided Engineering (CAE), and Finite Element Analysis (FEA) also ensures the specific Hydraulic machinery requirements of our customers are successfully met. Further , our expertise lies in application of advanced three-dimensional solid modeling with parametric associativity enables optimization of the offered press design, development and overall quality. This unique combination of technological expertise ensures that the engineered and manufactured range meet the defined industry standards for parameters like press strength, durability and deflection.

Our Strengths

We believe in five parameters that are our strength. These include

- Quality first
- On time Delivery
- Competitive prices
- Prompt Response
- Customer Satisfaction
- Sui - generis after sale Support

Some of the features that support us in matching up with clients requirements include:

- State-of-art manufacturing unit and R&D department
- Team working on latest software support like Pro-E, Auto Cad so as to deliver better design precision in the offered machines

Believing in easily accessible flow of information at each level of operations, we have designed our own ERP Software that helps in

- Releasing Purchase orders
- PPC
- Vendor Follow-ups
- Flow of Materials in Works

Further, the Software also assists in maintaining close monitoring at each and every stage of processes as well as also updating customers regarding their order stages.

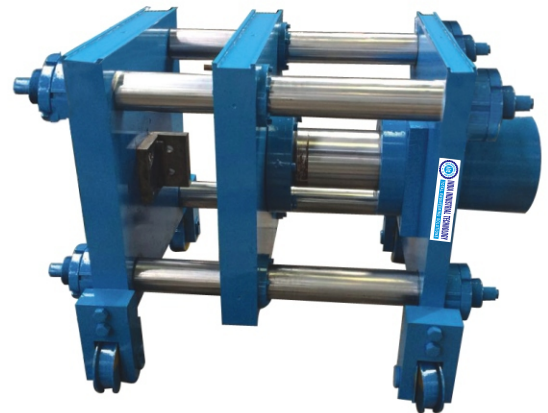


Hydraulic Press (30 Ton) Foam Cutting



Platen Size : 1000 x 1000mm
Four Guiding Pillar Type

Billet Shearing Machine



For Billet on Line Hot Shear

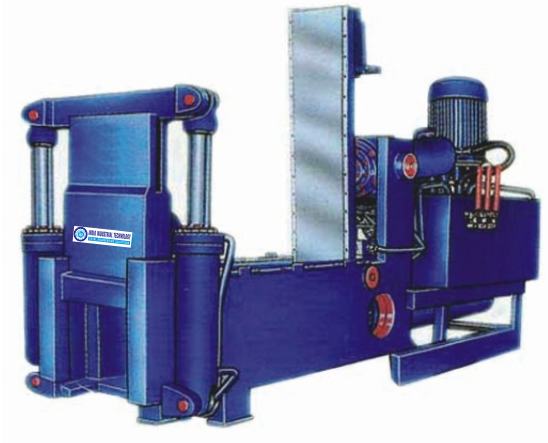
Paper, Clothes, Pet Bottles Pressing Vertical Baling Machine



Available in
15, 25 & 50 Ton

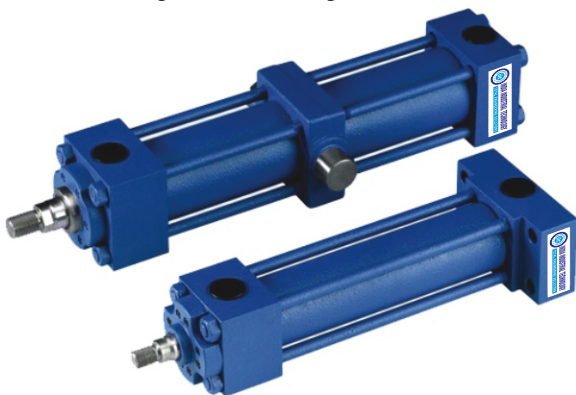
Available Bale Size (in mm)
400x600
600x600
600x900

Scrap Baling Press



Horizontal - Double Action
12"x12"x12" Steel Bricks

Hydraulic Cylinder



Bore upto 600 mm
Stroke upto - 3 Meter
Customised Mounting

Hydraulic Power Pack Small Unit



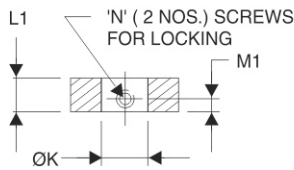
1 HP to 25 HP
upto 350 BAR



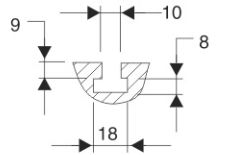
HYDRAULIC PRESS 'C' Frame



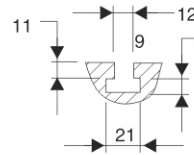
WITH ARG	WITH GMP	TON	Motor (H.P.)	Speed (mm/sec.)	Oil Tank Cap.	Working Pressure (Kg/Cm ²)	A	B	C	D	E	F	G	H	J	ØK	L	L1	M	M1	N	ØO	P	ØQ	T	U	V	W	X	Y	Z1	Z2
SE-03-1CA	SE-03-1CG	3	2	64	60 lts.	100	550	1450	125	250	350	260	250	250	38	20	25	38	10	10	M6	60	18	45	10	75	880	355	275	200	450	450
SE-05-1CA	SE-05-1CG	5	3	59	80 lts.	100	600	1670	150	300	400	285	280	280	43	25	30	43	10	12	M8	75	18	55	10	100	945	355	340	200	500	500
SE-10-1CA	SE-10-1CG	10	5	63	100 lts.	100	650	1960	175	300	500	360	350	350	53	25	40	53	10	12	M8	105	20	75	12	100	950	400	420	230	550	550
SE-20-1CA	SE-20-1CG	20	5	40	150 lts.	170	700	1970	200	350	550	400	380	380	62	30	60	62	10	12	M8	130	25	90	12	125	950	400	450	250	600	600
SE-30-1CA	SE-30-1CG	30	7.5	61	200 lts.	250	900	1980	200	350	600	440	380	380	72	40	80	72	12	15	M10	130	25	90	12	125	950	400	500	250	650	650
SE-50-1CA	SE-50-1CG	50	7.5	42	250 lts.	285	1100	2250	200	400	750	475	400	400	80	40	80	72	12	20	M12	130	30	90	16	150	960	400	525	250	750	750



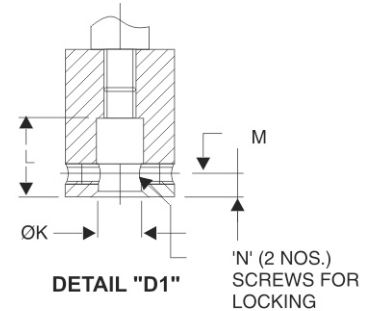
DETAIL "D2"



T-10 'T' SLOT



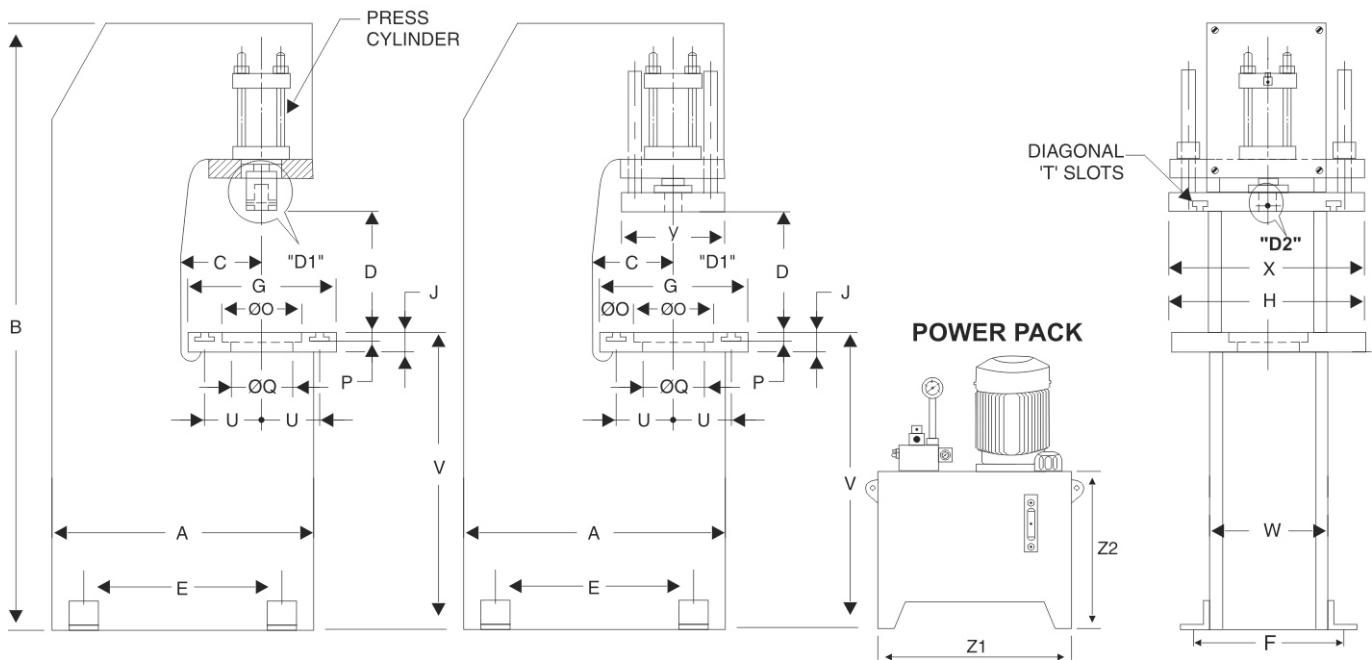
T-12 'T' SLOT



DETAIL "D1"

WITH ANTI ROTATION GUIDE

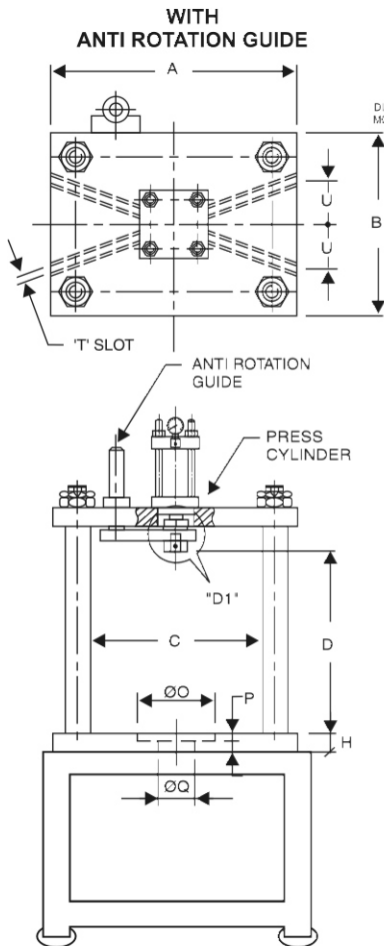
WITH GUIDED MOVING PLATEN



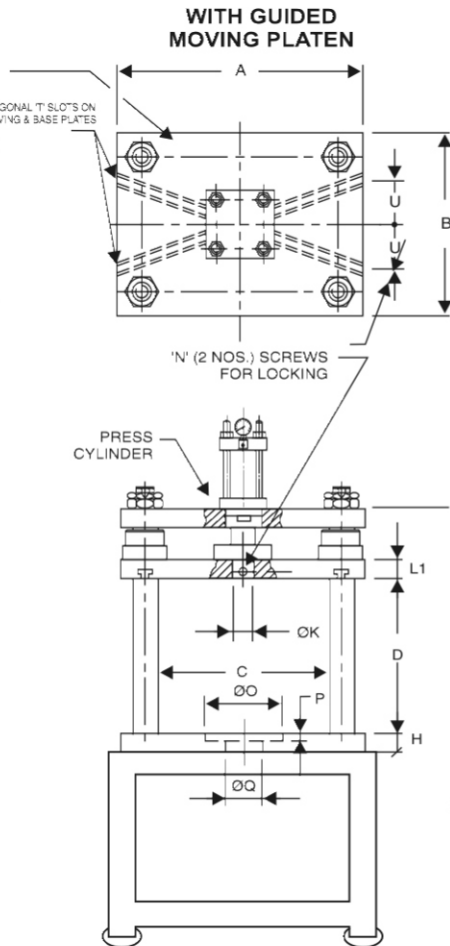
HYDRAULIC PRESS 'H' Frame



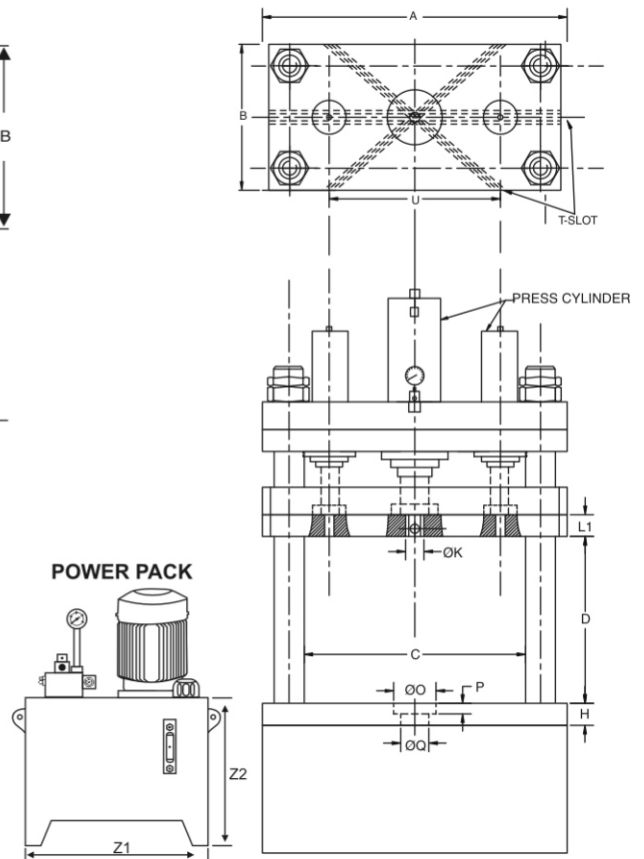
WITH ARG	WITH GMP	TON	Motor (H.P.)	Speed (mm/sec.)	Oil Tank Cap.	Working Pressure (Kg/Cm ²)	A	B	C	D	H	ØK	L	L1	M	N	ØO	P	ØQ	T	W	U	Z1	Z2
SE-03-4PA	SE-03-4PG	3	2	43	60 lts.	100	350	300	250	270	32	20	25	32	10	M6	60	18	45	10	38	75	450	450
SE-05-4PA	SE-05-4PG	5	3	39	80 lts.	100	400	300	300	300	38	25	30	38	10	M8	75	18	55	10	50	75	500	500
SE-10-4PA	SE-10-4PG	10	5	40	100 lts.	130	500	350	350	350	53	25	40	53	10	M8	105	20	75	12	50	75	550	500
SE-20-4PA	SE-20-4PG	20	5	63/16	180 lts.	255	510	350	350	350	62	25	60	62	10	M8	130	25	90	16	60	80	600	600
SE-30-1CA	SE-30-1CG	30	7.5	61/13	250 lts.	250	590	400	400	400	72	30	80	72	10	M10	130	25	90	16	75	90	650	650
SE-50-1CA	SE-50-1CG	50	7.5	37/8	250 lts.	250	830	600	600	450	100	40	80	100	12	M12	130	30	90	16	80	100	750	700
SE-75-4PA	SE-75-4PG	75	10	31/8	350 lts.	240	840	700	700	500	110	40	80	110	16	M12	130	30	90	16	90	100	850	750
SE-100-4PA	SE-100-4PG	100	15	241/9	500 lts.	185	980	700	700	600	120	40	90	120	20	M12	150	40	100	20	100	450	1050	850
SE-200-4PA	SE-200-4G	200	20	200/5	700 lts.	190	1240	900	900	700	220	50	90	130	20	M12	150	40	100	20	120	600	1100	900
SE-300-4PA	SE-300-4PG	300	20	127/4	700 lts.	215	1270	900	900	700	260	50	90	130	25	M12	150	40	100	20	130	600	1150	950



For 3, 5, 10, 20, 30, 50, 75 TON



For 3, 5, 10, 20, 30, 50, 75 TON



For 100, 200, 300 TON



Scissor Type Lifting Table

Height : Upto 3 Meter
Platform Size : Customised



Progressive Washer and Cutting Machine

- High Speed Cutting & Punching Press
- Feeding Automatic
- Gripper & Feeder in Auto/ Manual Mode
- 10 Ton to 100 Ton



Vacuum Laboratory Machine

Vacuum Chamber
Heating Chamber
Water Circulation
Air Circulation
Hydraulic Clamp Force



Travel Head Clicker Machine (30 Ton)

- For Leather, Fabric & Reckine Cutting
- Tonnage : 30 Ton
Travel Head : 550 x 1550 mm
Electric Motor : 3 Phase
- Fast Cutting Operation



Stamping Press

For Kitchen Sink & Other Stamping Works

Tonnage : 20 Ton
Operate : Foot Pedal

Stamp Guiding Fixture
Low Maintenance



Small 'C' Frame Press

- For Riveting, Cutting & Embossing
- Tonnage : 5 - 30 Ton
- 3 Side Open
 - User Friendly



Rubber Press

Automatic Ejection
Accurate Temp/ Pressure Controlling
High & Low Pressure
Bumping / Breathing Facility



Riveting and Punching Machine

Tonnage : 10 - 300 Ton
Operation : Riveting & Forging

P.L.C. Controlled
Safety Curtain

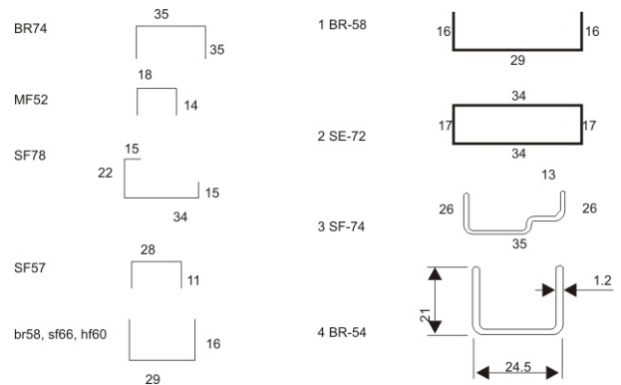


Rubber Compression Moulding Machine



- Accurate in Temperature (P.I.D.)
- Day Light Gap
- Day Light (Customised)
- Stroke up & Down (Customised)
- P.L.C. Controlled
- Pressure and Limit/ Timer Control Through P.L.C.

Open Section - Roll Forming



Dock Leveller



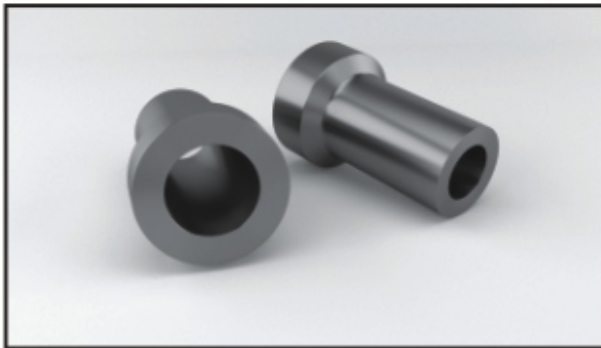
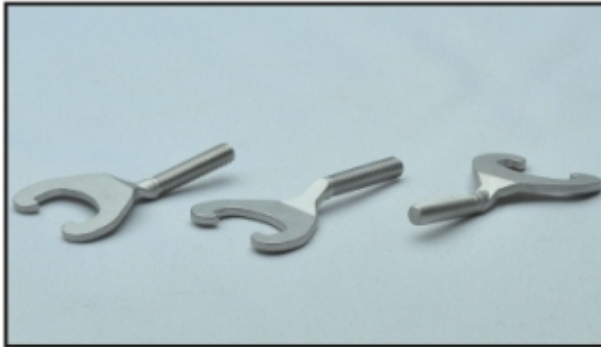
- D.C.Motor Operation
- A.C.Motor Operation
- Manual Pump Operating
- Dock Height & Width Customised

Cold Forging Press

Capacity : 50 to 600 Ton



Final Parts



Address : Plot No. 15-13/7D, Near Toyota Showroom
Daultabad Industrial Area, Gurugram-122006, Haryana (INDIA)
Mob.: 9873787786, 9811745210
Email: amjad.khanaat@gmail.com
Website: www.advanceappareltechnology.com